

# East Bay PASTORAL

MARIA TENAGLIA INFUSES A NEW HOME WITH HISTORY

TEXT **KENDRA BOUTELL** | PHOTOGRAPHY **PAUL DYER**

Landscape architect David Thorne incorporated British artist David Harber's sculpture *Dark Planet* into the garden, a slate sphere comprised of hundreds of irregular black puddle stones.

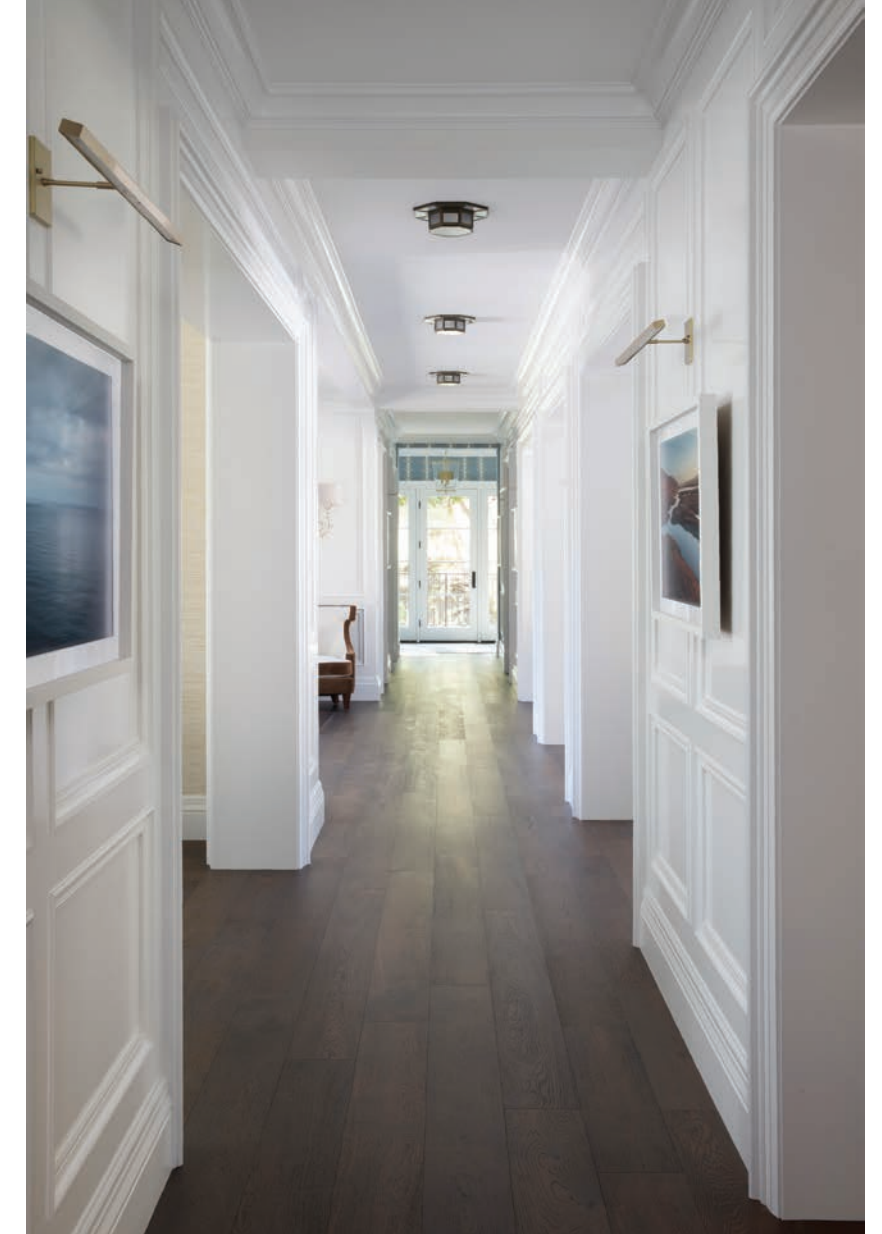


John Lyle Design's bronze fireplace screen adds an understated backdrop in the relaxed family room. In front of it, a pair of tailored club chairs and ottomans flank an Ironies' brass side table.

**BELOW** In the foyer, a pair of Porta Romana Trailing Blossom Wall Lights bracket the hall mirror. An area rug from Stark Carpet grounds the space. Local artisan Luis Norori crafted the baluster center table tucked into the curve of the stairway.



**RIGHT** Architect Alan Page of Talon Design Group used the hallways to create transition areas from one room to another. Tenaglia worked with art consultant Alice Ranahan on these spaces and the significant rooms in the house.



**W**HEN DESIGNER MARIA TENAGLIA STARTED work on a classic two-story family home in the East Bay, she joined the design team of architect Alan Page and landscape architect David Thorne. Page and Thorne had spent a year planning the new construction of the 12,000 square foot compound sited on a ten-acre parcel. The pastoral setting includes a gently sloping valley floor surrounded by steeply inclined hills covered with indigenous savannah and oak woodland.

Over the next three years, Tenaglia oversaw the project's interior design and interior architecture, creating a balance between aesthetics and function. The residence's color palette of blue, green, brown, gold, and cream reflects the nuanced shades of the native and planned landscape contrasted with the intense hue of a golf simulator's artificial grass. Tenaglia added beamed, planked, and paneled ceilings along with wall wainscoting and paneling to give the new house a sense of history.

For the living room, Tenaglia punctuated the cream walls with pops of blue and gold. She lined the bookshelves with a metallic grasscloth from Aux Abris to showcase accessories such as the carved wood homes from Rose Tarlow Melrose House.





**BELOW** The celadon and blue laundry room shows the same attention to detail as the public rooms. Decorative artist Caroline Lizarraga consulted on the project's extensive paint schedule.

**OPPOSITE** Throughout the interiors, Tenaglia mixed vintage with showroom pieces to give the new home a patina. The restored brass and Murano glass chandelier over the kitchen dining table is mid-century and provides the room with soul.



The homeowners love to entertain, and the foyer graciously welcomes guests with an Art Nouveau-styled settee. Keith Fritz's Ball and Faceted Spike mirror surmounts the sofa, and a John Pomp hand-blown glass pendant chandelier illuminates the lyrical spiral staircase. A long elegant gallery segues from the foyer into the two-story living room divided by two seating areas. Sam Moyer's expressionist painting incorporating travertine fragments onto a

cobalt-painted canvas dominates one side of the room. Tenaglia juxtaposed this with a massive traditional limestone fireplace mantle on the opposing side.

The designer utilized a white Perennials indoor and outdoor fabric for the sofa upholstery as the living room opens to the outdoor pool and conversation groups. There is easy access to the family room from the pool area with its connected kitchen

and informal dining space where the homeowners spend most of their time. Tenaglia employed multiple shades of cream and green in the kitchen areas for the paint surfaces with a contrasting dark brown French oak floor. Eight modern Altura arm and side chairs surround a wooden race-track dining table. The celadon-colored chair upholstery echoes the colors of the vintage glassware and Benedetto

Fasciana's botanical plates displayed in the custom cabinetry.

While most home's interiors are light and airy, Tenaglia went dark and exotic for the powder room and its vestibule. Decorative artist Caroline Lizarraga glazed the ceiling a deep teal and verdigris-colored textured grass cloth covers the walls. Over the Nero Marquina vanity, a Powell & Bonell silver leaf mirror with an ocean blue ombre effect adds glamour to the jewel box room. **CH**



**ABOVE** The powder room vestibule is where the family exhibits their travel photos. Elmdon Picture Lights from Vaughn showcase them while Jonathan Browning Studios Chatelet Sconces bracket the vanity mirror.

**BELOW** Tenaglia installed a pair of indigo velvet lounge chairs with a graceful sloping arm in the U-shaped bay window. Kelly Wearstler's Cleo Pendant from Visual Comfort adds both drama and architecture to the corner.



**BELOW** A pair of white Lawson Fenning's bedside cabinets flank the headboard upholstered in a blue Holly Hunt textile in the main guest room. Alabaster and brass table lamps from Vaughan illuminate each chest.